

Warm Up: Alg 2

9/18

6. Which of the following mathematical expressions is equivalent to the verbal expression "A number, x , squared is 39 more than the product of 10 and x " ?

~~F.~~ $2x = 39 + 10x$

~~G.~~ $2x = 39x + 10x$

~~H.~~ $x^2 = 39 - 10x$

J. $x^2 = 39 + x^{10}$

K. $x^2 = 39 + 10x$

$$x^2 =$$

Feb 27-7:39 AM

8. Terry sold 178 tacos on Tuesday from his taco stand. This was 23 more than five times the number of tacos he sold last Tuesday. How many tacos did Terry sell from his taco stand last Tuesday?

F. 13

G. 31

H. 40

J. 59

K. 775

$$\begin{array}{r} 23 + 5x = 178 \\ - 23 \quad - 23 \\ \hline 5x = 155 \\ \frac{5x}{5} = \frac{155}{5} \end{array}$$

Sep 18-7:30 AM

3. Which of the following expressions is equivalent to $b(b - 3) - 7(2 + b)$?

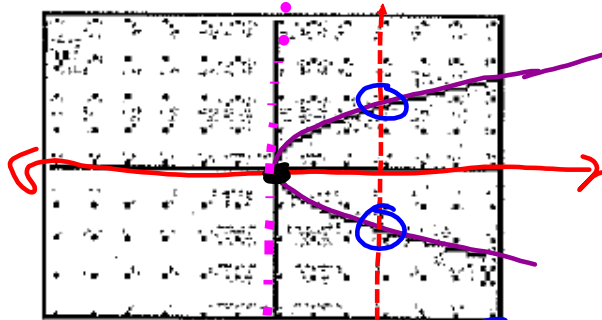
- ~~A.~~ $-11b - 14$
- ~~B.~~ $-11b + 2$
- C.** $b^2 - 10b - 14$
- ~~D.~~ $b^2 - 10b + 2$
- ~~E.~~ $-11b^3 - 14$

$$b^2 - 3b - 14 - 7b$$

$$b^2 - 10b - 14$$

Sep 18-7:31 AM

5.



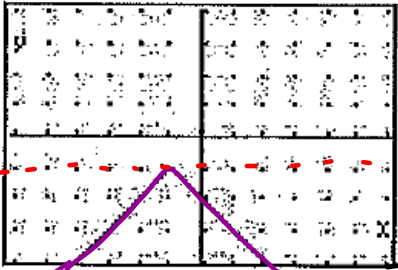
Domain: $[0, +\infty)$

Range: $[+\infty, -\infty)$

Function:

Sep 18-8:00 AM

7.



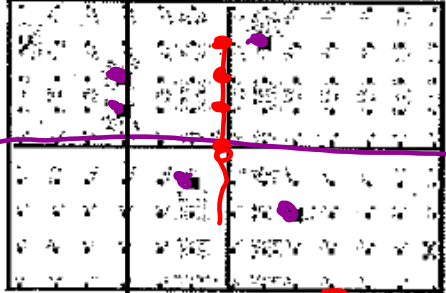
Domain: $[-\infty, +\infty]$

Range: $[-1, -\infty]$

Function:

Sep 18-8:09 AM

9.



Domain: $[-3, 2]$

Range: $[3, -2]$

Function:

Sep 18-8:12 AM

Today's Activities:

- Domain and Range Conversation

P.W. for tonight:

- Finish Worksheet: Domain and Range

Day 4

Dec 31-9:59 PM