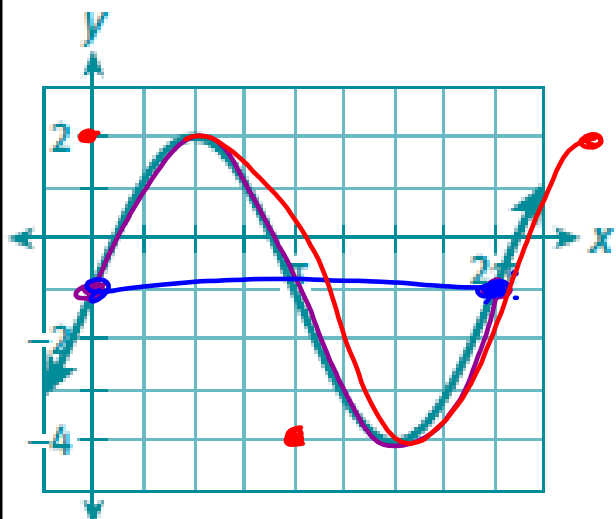
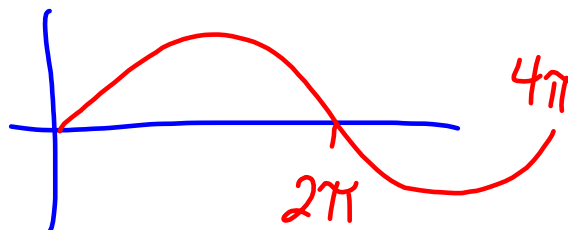


Warm Up: Pre-Calc

2/10



Write an equation for the graph in terms of sine or cosine.



Feb 27-7:39 AM

W.A.L.T.:

Apply our understanding of the transformations of functions to read and write information about $f(x) = \cos x$ and $g(x) = \sin x$ functions.

W.A.S.I.:

We can read and write parent functions of sine and cosine for period, amplitude and midline.

Mar 7-9:45 AM

Work Day:

Assignment: pg. 235 - 236 #1 - 17

Assessment: pg. 245 - 246 #1 - 6 (Skip 2c, 6 d - f)



Feb 25-10:31 AM

Today's Activities:

- Workday

P.W. for tonight:

- Assignment: pg. 235 - 236 #1 - 17

- Assessment: pg. 245 - 246 #1 - 6 (Skip 2c, 6 d - f)

Feb 27-7:23 AM