

Warm Up: Geometry

1/8

At a carnival 2 tickets cost \$3, 6 tickets cost \$6 and 10 tickets cost \$9. If the pattern continues then 66 tickets would cost \$ ____.

Need your book!

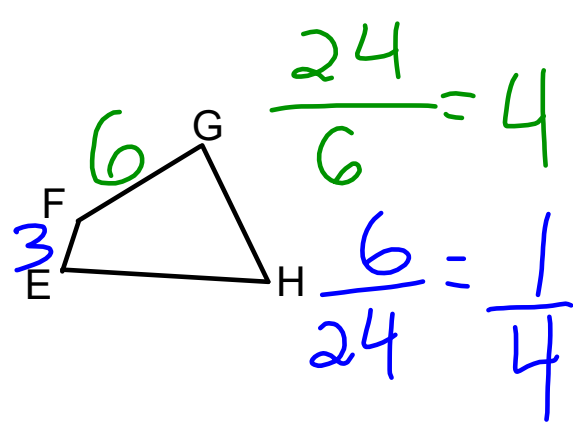
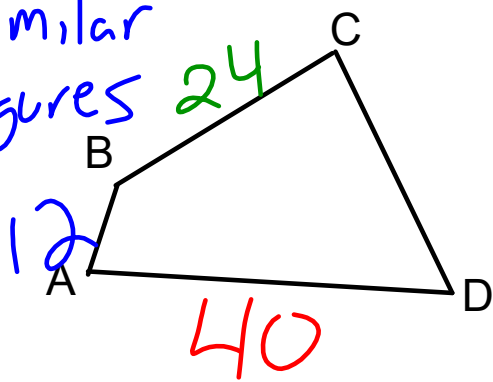
Feb 27-7:39 AM

Warm Up: Geometry

1/8

If $BC = 24$ and $FG = 6$, what is the scale factor?

Similar Figures

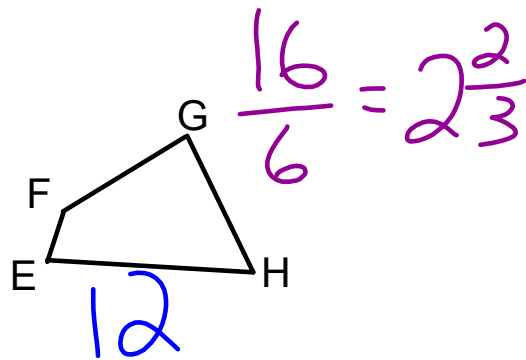
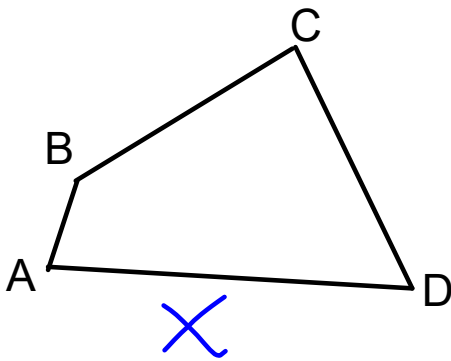


Feb 27-7:39 AM

Warm Up: Geometry

1/8

If $CD = 16$ and $GH = 6$, what is the scale factor?

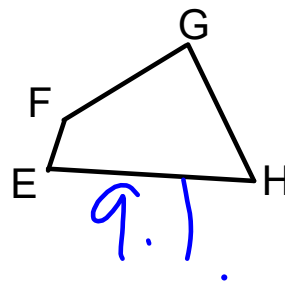
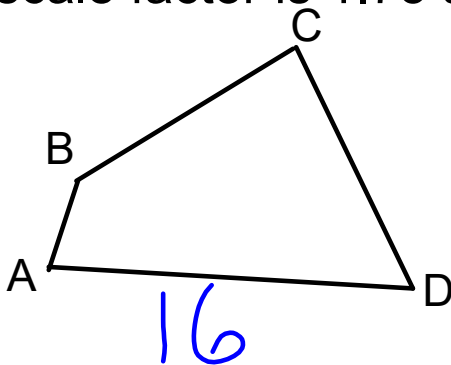


Feb 27-7:39 AM

Warm Up: Geometry

1/8

If the scale factor is 1.75 and $AD = 16$, what is EH ?

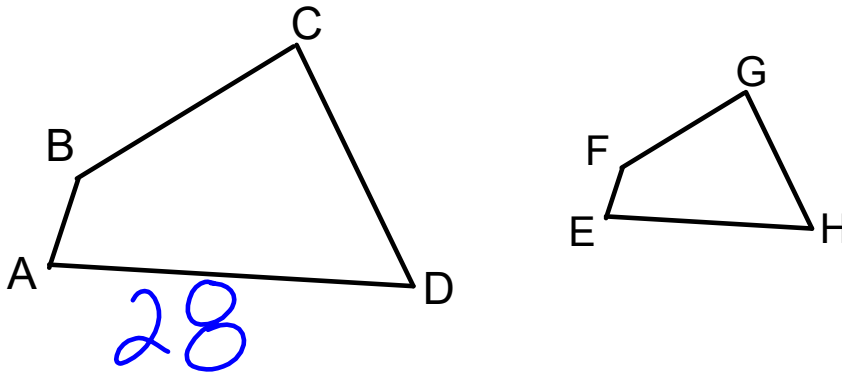


Feb 27-7:39 AM

Warm Up: Geometry

1/8

If the scale factor is 1.75 and $EH = 16$, what is AD ?



Feb 27-7:39 AM

Solutions to P.W.: Geometry

- 1)
- 2)
- 3)
- 4)
- 5)

Dec 31-10:07 PM

W.A.L.T.:

Day 2

Apply our understanding of similarity

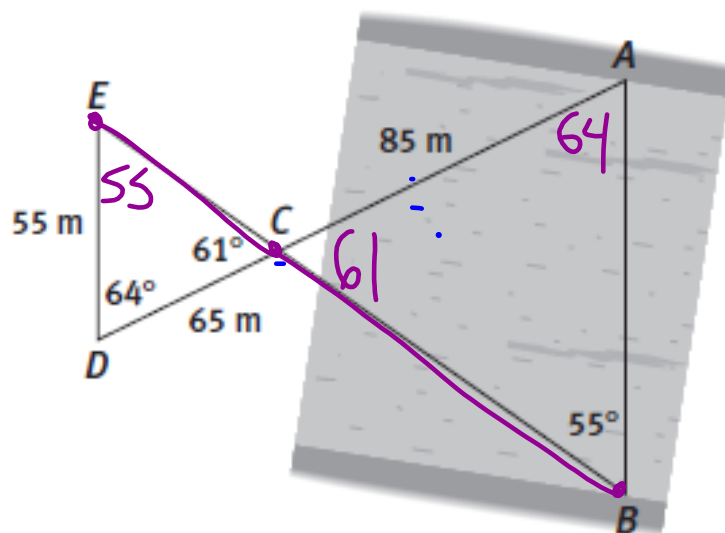
W.A.S.I.:

We can use decide if the triangles are similar and then use similarity to find the missing side lengths.

Mar 7-9:45 AM

In Class Work:

pg. 262 #1,2



Mar 7-1:33 PM

Today's Activities:

- In class examples

P.W. for tonight:

- none.

Dec 31-9:59 PM