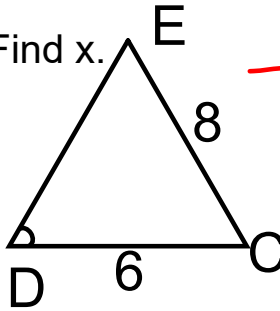


Warm up: Geometry

1/15

Is triangle ABC similar to triangle DEC? Why/why not?

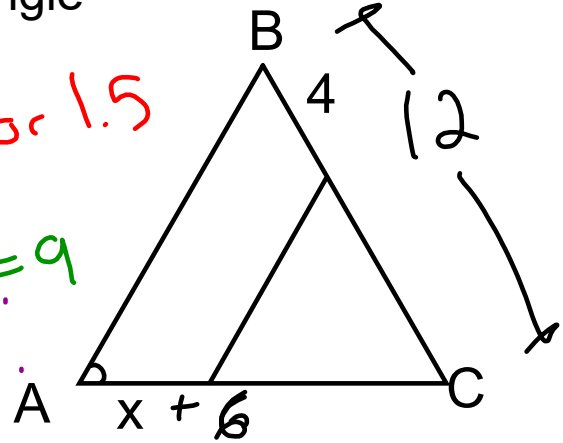
Find x.



$$\frac{12}{8} = \frac{3}{2} \text{ or } 1.5$$

$$\frac{3}{2} \cdot \frac{6}{1} = \frac{18}{2} = 9$$

What is 9?



Jan 15-1:03 PM